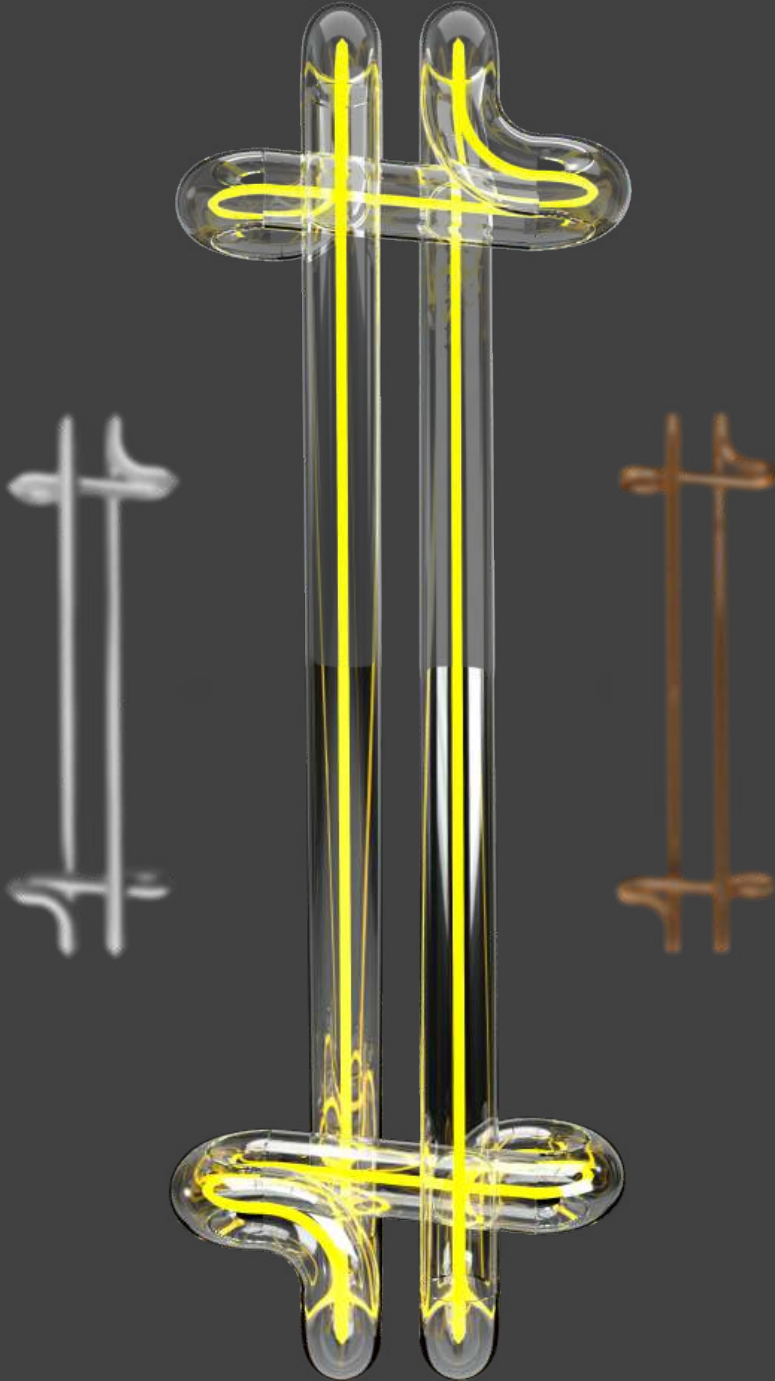


TRANSGENERATIONAL

The 11th International
Arts and Design Symposium 2023

TRANSGENERATIONAL

The 11th International
Arts and Design Symposium 2023



TRANSGENERATIONAL

The 11th International
Arts and Design Symposium 2023

by Council of Arts and Design Deans of Thailand (CADDT) and The Association of Siamese Architects under the Royal Patronage (ASA) together with the Faculty of Digital Arts, College of Design and the Faculty of Architecture Rangsit University.



www.workinprogress-symposium.design

EXECUTIVE COMMITTEE

Prof. Ekchart Joneurairatana

Silpakorn University, Thailand

Prof. Kamol Phaosavadi

Chulalongkorn University, Thailand

Assoc. Prof. Pisprapai Sarasalin

Dean of College of Design, Rangsit University, Thailand

Somchai Jongsaeng

Silpathon Award in Design, Thailand

Chookiat Likitpunyarut

Senior designer and artist, Designer of the year committee, Thailand

Jitsing Somboon

(Head of Designer, Greyhound, Thailand) Assoc. Prof. Dr. Tan Jeanne
(Institute of Textiles & Clothing, The Hong Kong Polytechnic
University, Hong Kong)

Franyo Aatoth

Artist Creator of exceptional graphic works, France

Geri Forkner

Textile Artist, USA

Prof. Kaname Yanagisawa

Architect, Chiba University, Japan

Prof. DeDeniz Hasidic

İzmir Ekonomi Üniversitesi, Turkey

Marco Corbella

Architect/Designer, Italy

Asst. Prof. Andrew I-kang Li, Ph.D.

Kyoto Institute of Technology, Japan

Asst. Prof. Walaiporn Nakapan, Ph.D.

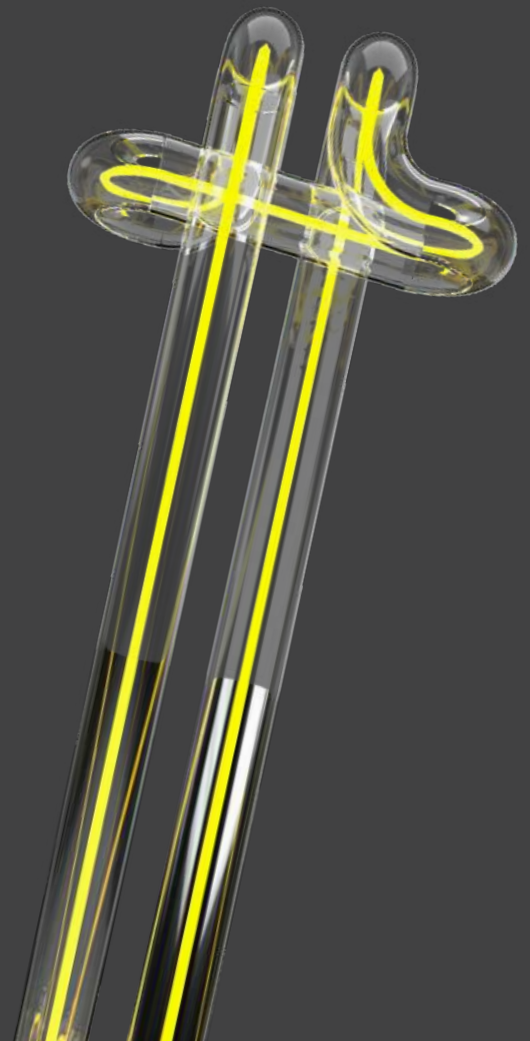
Architect, Founder of Parabolab, Thailand

Assoc. Prof. Chaiyasit Dankittikul, Ph.D.

Silpakorn University, Thailand

Assoc. Prof. Dr. Raksarn Wannawattawong

Chulalongkorn University, Thailand



“Non – Core Center SBS”

Assist. Prof. Mr.Porramaze Ponrattanasit

Introduction :

This Non-core Center SBS project was initiated by the project owner (Satit Bilingual School of Rangsit University) with an intention of creating a small space for students' useful after-school activities. Individuals or external expertised organizations are welcome to use the space for arranging interesting activities for students to build skills, creativity, and experience as well as fulfill the knowledge gained in the classroom voluntarily. The school will gain income from space rental services and management as well as create an area to connect students and their parents who are interested in the activities with reputable external organizations.

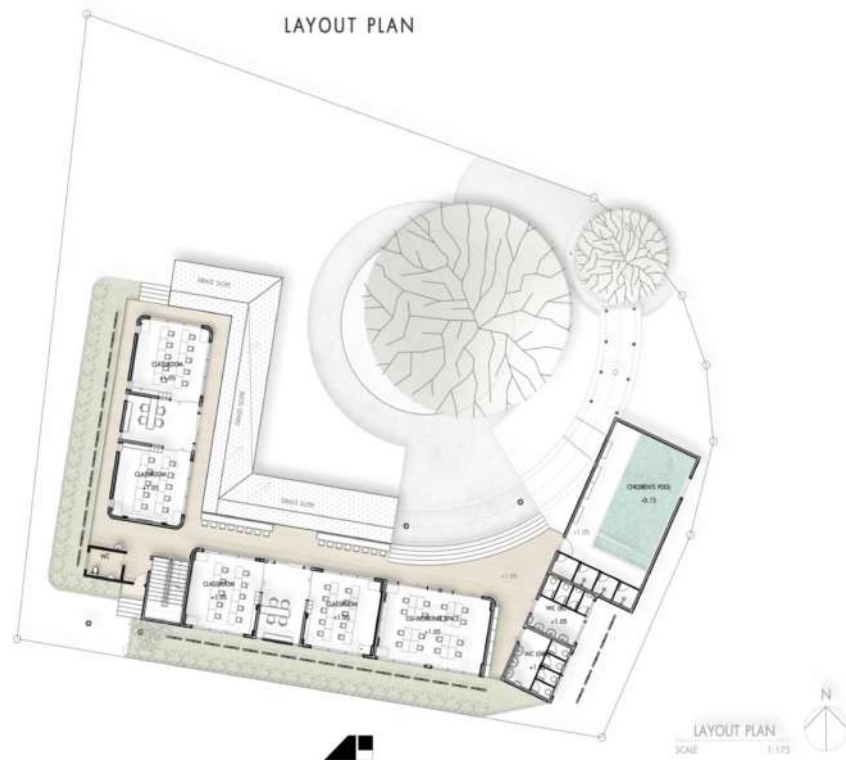
The design requirements of a space for outsiders to rent out for business and activities for elementary school students, a small swimming pool for kindergarten students, a multi-purpose area for school creative activities, a coffee shop as a waiting area for parents, and a landscape area for children to exercise, run, play, and relax while learning were given to the designer.

The designed architectural work that has been approved by the project owner is a 2-story building in a U shape locating almost close to the 3 edges of the land. The entrance faces the corridor connecting to the entrance and exit at the back of the school near the parking area where parents pick up students. The selected building orientation results in a large empty space in the middle for the landscape architectural area to create a sense of security while using the space since it is enclosed by 3 sides of the building.

The connection with and access to the usable areas from the outside to the inside of the building are designed with an open covered roof area. Transition space and ramps are used to connect the usable areas on the lower and upper floors to create safety for the vertical direction traffic as well as an activity area.

Objectives :

To design a safe after-school activity areas for students, both inside and outside the building

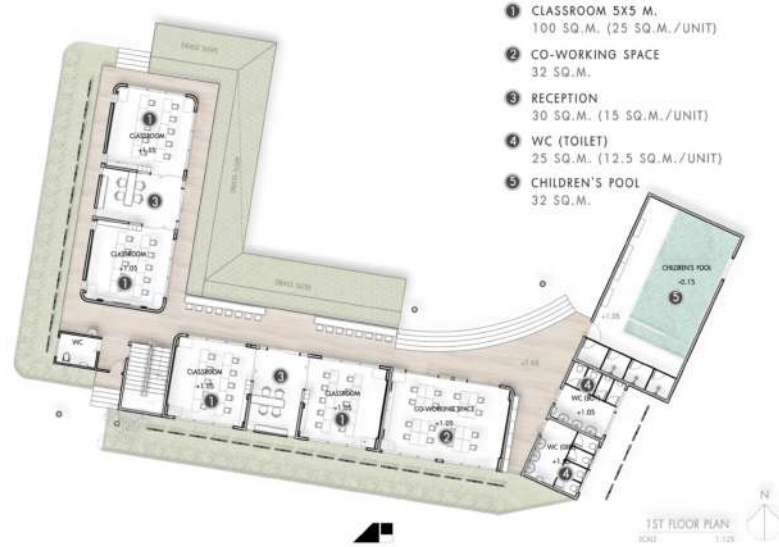


Methodology:

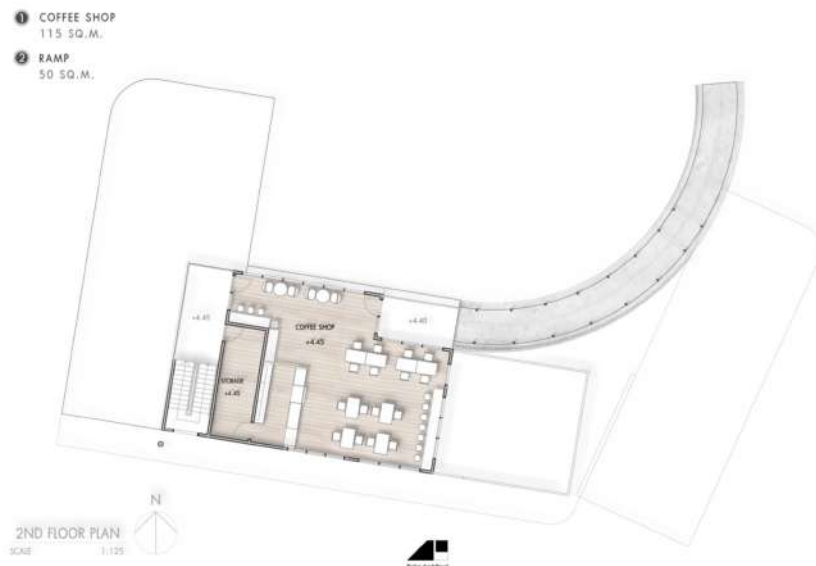
Design an enclosed building in the project area to create an empty space in the middle for landscape architecture, use the curve of the ramp and reduce the corners of the walls, both inside and outside, to add a sense of relaxation and safety. 8. Areas of Creative Works / Techniques and Materials (*Optional): Architectural design for safe use, landscape design that connects the external space to the internal space, and material and architectural detail selection for the safety of project users both in the short and long terms



1 ST FLOOR PLAN



2 ND FLOOR PLAN



Conclusion:

The project is currently under construction and will be completed by April before the end of the semester. Outsiders operating activity businesses for students have rented all spaces of the project.

References:

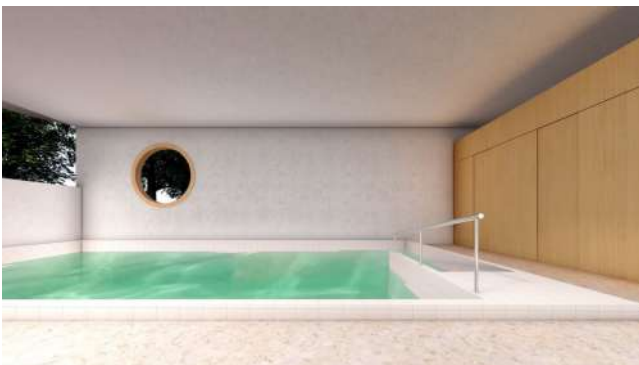
[Referencing / Bibliography to start on a new page – Please delete] In-text citations Please ensure that every reference cited in the text is also present in the reference list (and vice versa).

Reference style Within the text:

Citations in the text should follow the referencing style used by the American Psychological Association (APA). Publication Manual of the American Psychological Association, Sixth Edition, ISBN 978-1-4338-0561-5.

List at end of paper:

References should be arranged first alphabetically and then further sorted chronologically if necessary. Please single space, and indent after the first line of each.





Reference to a journal publication:

Van der Geer, J., Hanraads, J. A. J., & Lupton, R. A. (2010). The art of writing a scientific article. *Journal of Scientific Communications*, 163, 51–59.

Reference to a book:

Strunk, W., Jr., & White, E. B. (2000). *The elements of style*. (4th ed.). New York: Longman.

Reference to a chapter in an edited book:

Mettam, G. R., & Adams, L. B. (2009). How to prepare an electronic version of your article. In B. S. Jones, & R. Z. Smith (Eds.), *Introduction to the electronic age* (pp. 281–304). New York: E-Publishing Inc.



